



# 2023 YEAR IN REVIEW

NEW CHAPTERS



4

NEW PODCAST EPISODES



25

VIRTUAL & LIVE EVENTS



70

NEW MEMBERS



120

## 🌟 Celebrating a Stellar 2023 at C-Sweet - Thanks to You! 🌟

As the year comes to a close, we're overflowing with gratitude towards our incredible members, friends, and the wider community. Your support and dedication have propelled us to new heights - making 2023 our most remarkable year yet!

Here's a snapshot of our amazing achievements:

- Welcomed four new chapters: Charlotte, Mid-West, Southern Nevada, and San Francisco.
- Hit a milestone with over 50 podcast episodes, adding 25 thrilling new episodes this year.
- Hosted over 70 dynamic virtual and in-person events.
- Launched exciting new initiatives, including our Executive Coaching program and Women In Tech group.
- Expanded our vibrant community with over 120 new executive women leaders.

Your involvement has been the key to our success, fueling our mission to make the C-suite more inclusive for women and minorities.

We're just getting started! Get ready for an even more impactful 2024. Together, let's continue to break barriers and lead with excellence.

---

**Join by December 31, 2023 and receive a 10% discount  
on your 2024 membership!**

Use **CSWEET10** at checkout below.

C-Sweet's mission is to empower executives like you! We're focused on three key pillars to uplift your professional journey:

- 1. Building Exceptional Relationships:** Cultivate meaningful connections at our networking events, conferences, and online platforms, linking you with a national network of women leaders. Our goal is to facilitate a platform for women to work together at the most executive levels - we work together, hire each other and pull each other up.
- 2. Empowering Professional Growth:** Leverage our career center, executive coaching, workshops, and webinars to enhance your skills and stay ahead in the ever-changing business landscape.
- 3. Exceptional Events:** Join over 70 live and virtual events yearly, including Women on Boards and educational programs, designed to inspire and elevate women in their careers.

As a C-Sweet member, you'll enjoy exclusive discounts, recognition for your professional achievements, and *a community that truly supports, empowers, and connects.*

Let's forge a future where we thrive together in the C-suite, creating a more equitable and inclusive world.

*Non-member pricing will increase in 2024 so take advantage of this savings now!*

JOIN NOW



**Congratulations to Marina Chase**, a Financial Consultant, Certified Treasury Professional, and Certified Accountant at MC Consulting, and a valued C-Sweet member, for acing her Board Certification Exam! 🎉👏

---

**C-Sweet is growing!**  
**Join the C-Sweet Executive Committee!**

**We're looking for executive committee members in the following chapters: NY and the DC-Maryland-Virginia area.**

As an executive committee member, you'll be involved in event planning, sponsorship, and membership growth. This is an outstanding opportunity to expand your professional circle and make an impactful change on a local and national level. Ideal candidates are those active in corporate sales or with connections to executive women across various sectors.

Ready to elevate women in leadership with us? Apply by submitting your resume and a personal statement explaining your interest in joining our executive committee to [csweetexecs@gmail.com](mailto:csweetexecs@gmail.com)

*Your privacy is paramount; all applications are treated with the utmost confidentiality.*

---

# A WARM WELCOME TO OUR NEW MEMBERS!



**Rachel Barac**

Rachel joins our LA chapter and is a career and leadership coach. She supports clients in discovering their strengths, devising a roadmap for growth, achieving their objectives, and transforming personally and professionally.



**Sue Hoyle**

Sue joins our LA chapter and is a C-level financial consultant and troubleshooter, with 45+ years key financial management experience in companies of all sizes across all industries, including companies that are public vs private, start-up vs mature, and domestic vs global, along with 15+ years in audit and M&A as a CPA with three of the Big Four accounting firms.





**Monica Sevy**

Monica joins our San Francisco chapter and is Vice President, I.T. at EarthJustice. She is a strong technology professional with a demonstrated history of working in the education industry. She's skilled in Enterprise Software, Business Development, Strategic Planning, Customer Relationship Management (CRM), and Strategy.



**Rachel Barack**

Rachel joins our LA chapter and is EVP- General Counsel and Chief Human Resources Officer of Athens Services.

---



CSWEET  
**UPCOMING EVENTS**

---



**BUSINESS ROUNDTABLE**

**TOP TEN RESOLUTIONS FOR  
DRIVING GLOBAL  
TRANSFORMATION  
PROGRAMS IN 2024**

presented by Marisa Kabasinkas  
SVP, Global Business Transformation &  
Operations Management at Interpublic  
Group (IPG)

This event is open to ALL!

Thursday | January 4th  
7:30 am PT / 10:30 am ET  
[www.csweet.org/Events](http://www.csweet.org/Events)



[Register Here](#)



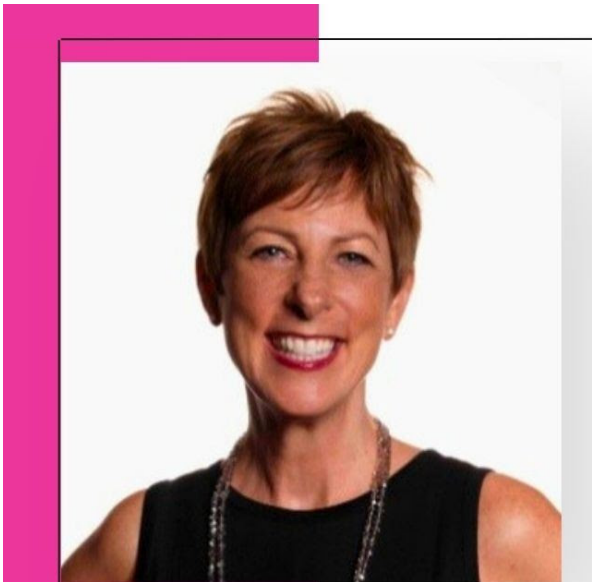
**Women on Boards Roundtable**

**DEMYSTIFY THE BOARDROOM  
WITH HIM FOR HER**

presented by Laura Gluhanich  
Senior Director of Programs, Him for Her

Tuesday | January 16th  
12:00 pm PT / 3:00 pm ET  
Register Here: [www.csweet.org/Events](http://www.csweet.org/Events)

[Register Here](#)



**DMV CHAPTER SPONSORED**

## Empower Your Year with Goals You Care About

presented by Lindsay Satterfield  
Productivity Trainer & Coach,  
CEO, SATTERFIELD & COMPANY

Join us for a new approach to  
goal-setting in 2024.  
This event is open to ALL!

Thursday, January 18th  
Noon ET / 9:00am PT  
[www.csweet.org/Events](http://www.csweet.org/Events)

[Register Here](#)



**SOUTHERN NEVADA PREMIERE**

## NAVIGATING A BRAVE NEW ECONOMIC WORLD

presented by Andrew Woods  
Director, Center for Business and Economic Research  
(CBER), University of Nevada

Thursday | January 25th  
5:30 - 8:00 PM PT  
at Chef's Roma Kitchen  
1550 W Horizon Ridge Pkwy, Henderson, NV 89012  
Register Here: [www.csweet.org/Events](http://www.csweet.org/Events)

Sponsored by:

**NUTANIX**

**JUST MEDICARE**

**UNCLE NEAREST**  
PREMIUM WHISKEY

[Register Here](#)

For more upcoming events, click [here](#).

Your support of RedRover will make a huge difference in the lives of animals and the people who love them.



## Special Thanks to Our Sponsors



---

### Not yet a member?

Explore membership [here](#).

### Want to stay connected?

Join our [LinkedIn](#) and [Facebook](#) communities and follow our podcast on [Instagram](#).

---

[Unsubscribe](#)